



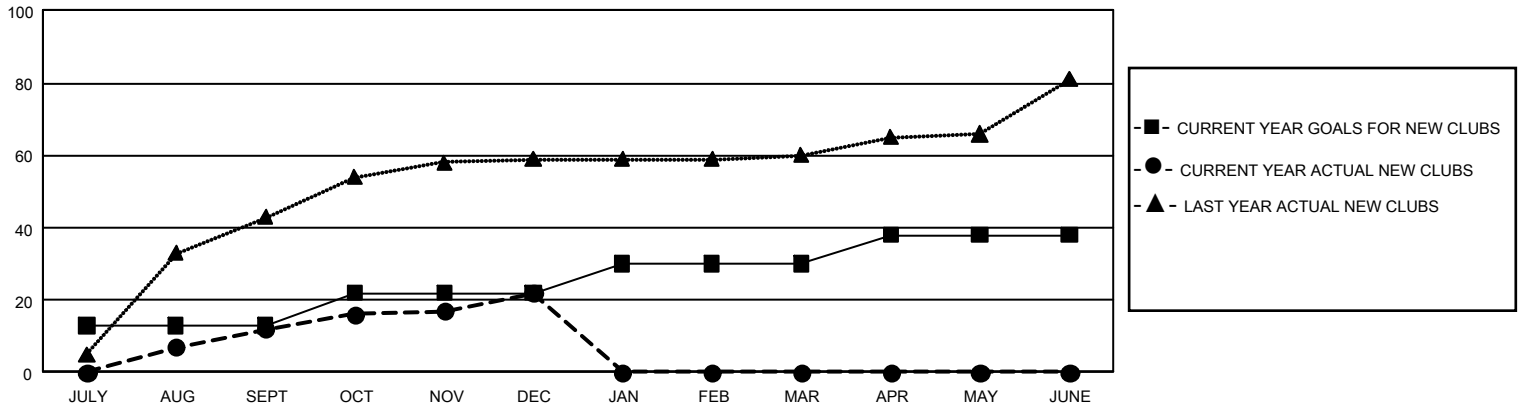
GMT Constitutional Area 7, Group C

GMT: OPEN

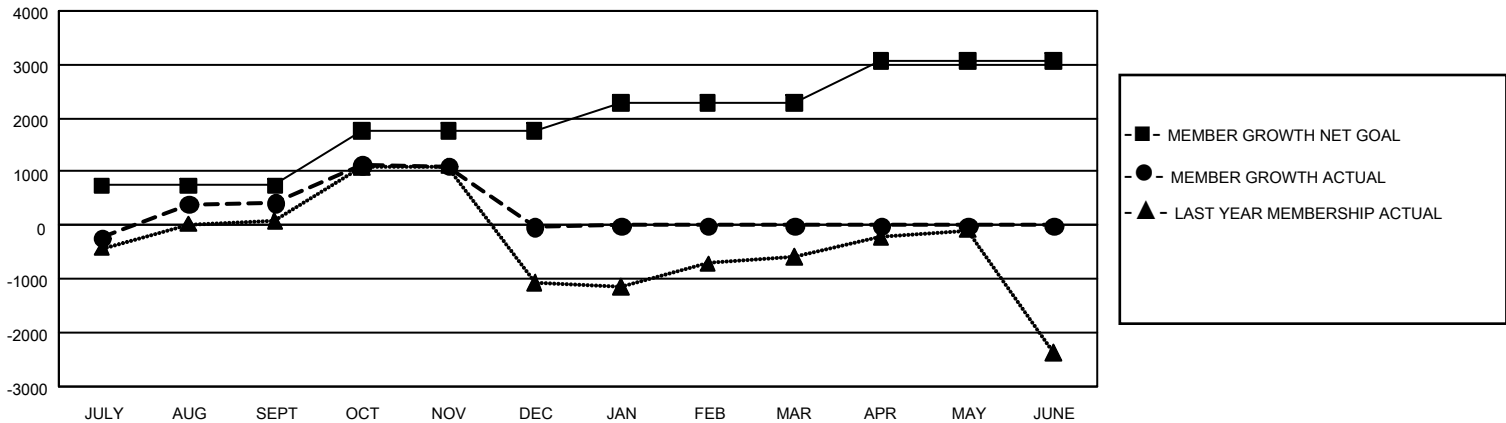
REPORT DOES NOT INCLUDE CLUBS IN UNDISTRICTED AREAS.

Clubs				Members			
RESULTS FOR 2019-2020				RESULTS FOR 2019-2020			
QUARTER	NEW CLUB GOAL	NEW CLUBS	DROPPED CLUBS	QUARTER	MEMBER GROWTH NET GOAL	MEMBER GROWTH ACTUAL	DROPPED MEMBERS ACTUAL (including transfers)
JULY/AUG/SEPT	39	12	24	JULY/AUG/SEPT	2,235	1,255	684
OCT/NOV/DEC	27	10	23	OCT/NOV/DEC	3,030	1,289	1,718
JAN/FEB/MAR	24	0	0	JAN/FEB/MAR	1,575	0	0
APR/MAY/JUNE	24	0	0	APR/MAY/JUNE	2,370	0	0

GOALS AND ACTUAL NEW CLUBS CUMULATIVE



GOALS AND ACTUAL MEMBERS CUMULATIVE



DROPPED CLUBS: 47	366 CLUBS OF 674 ADDED 1 OR MORE NEW MEMBERS	<u>GENDER DISTRIBUTION</u>					
<u>DROPPED MEMBERS</u>		MALE	9,514 (48.84%)				
DECEASED	28	FEMALE	9,966 (51.16%)				
CLUB CANCELLED	239	<table border="1"> <tr> <td>TOTAL FAMILY UNIT MEMBERS</td> <td>4,301</td> </tr> <tr> <td>FAMILY MEMBERS PAYING HALF DUES</td> <td>2,324</td> </tr> </table>		TOTAL FAMILY UNIT MEMBERS	4,301	FAMILY MEMBERS PAYING HALF DUES	2,324
TOTAL FAMILY UNIT MEMBERS	4,301						
FAMILY MEMBERS PAYING HALF DUES	2,324						
OTHER	2,135						
TOTAL	2,402						
CLICK HERE FOR CUMULATIVE MEMBERSHIP DATA							